

AurAir BI



Quick Start Guide

Overview

Flame Resistant Encasing

The AurAir encasing is flame resistant, making it impossible to burn.

Display

All measured sensor values are displayed here. Several indicators are displayed on the right hand side, like WiFi mode, measurement unit and countdown until next CO2 measurement indicator.

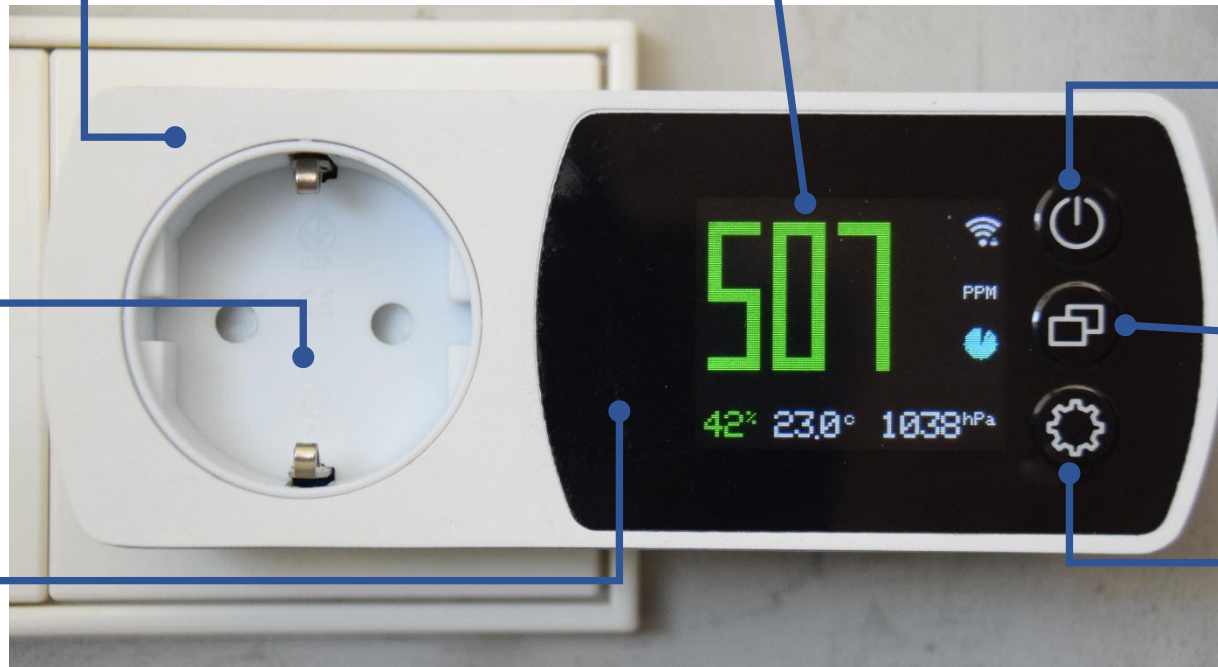
Wall Socket

This is a straight through wall socket suitable for all countries with a CEE 7/3 socket and CEE7/7 plug. Countries like Germany, the Netherlands, Sweden, Norway and Finland.



Front Panel

When the AurAir is powered off, only the side buttons are visible.



Display Button

Single click: Switch display off
Double click: Dim display
Long click: Update Firmware

Mode Button

Single click: Display graph
Double click: Display max/min values
Long click: Calibrate CO2 Sensor

Settings Button

Single click: Display cloud password
Double click: Disable password
Long click: Reset to factory settings

Icons and Values

Relative Humidity Value

The relative humidity value is displayed on the lower left side, followed by the symbol (%). Healthy values are displayed in green, mediocre values in yellow and unhealthy values in red.

CO2 Value

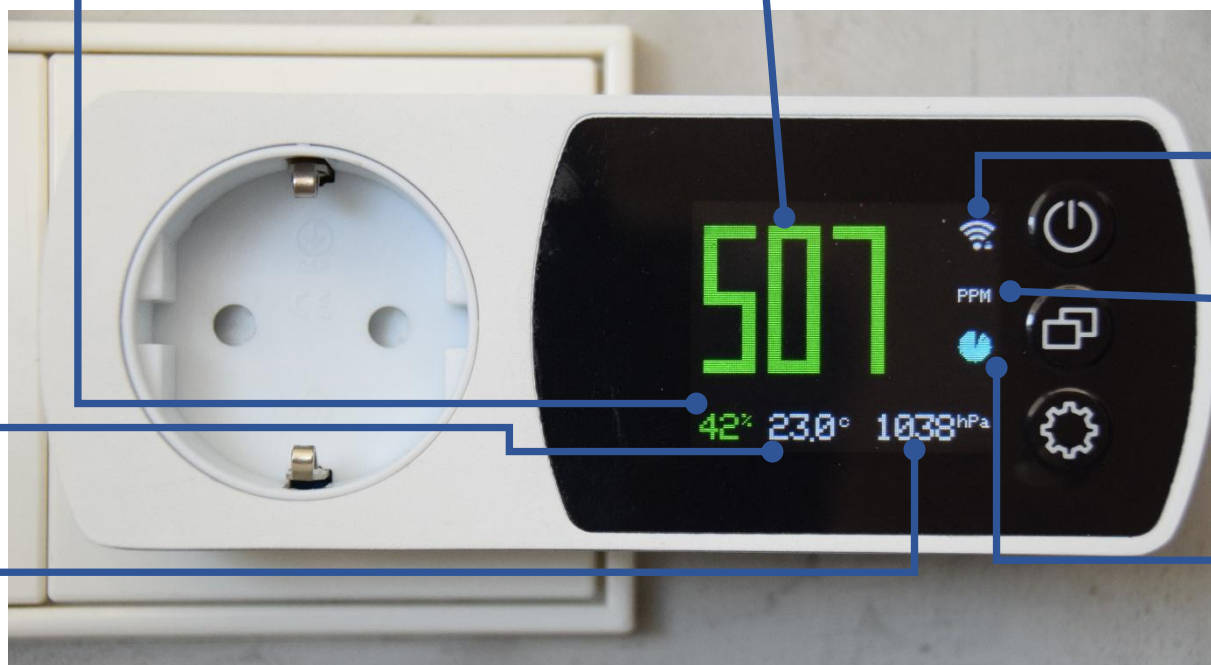
All measured CO2 sensor values are displayed here. Healthy values are displayed in green, mediocre values in yellow and unhealthy values in red.

Temperature Value

The temperature value is displayed on the lower mid side, followed by the metric unit symbol Celcius (c). The temperature has a single white color.

Air Pressure Value

The air pressure is displayed on the lower right side, followed by the metric unit symbol (hPa). The pressure has a single white color.



WiFi Icon

Single click: Switch display off
Double click: Dim display
Long click: Update Firmware

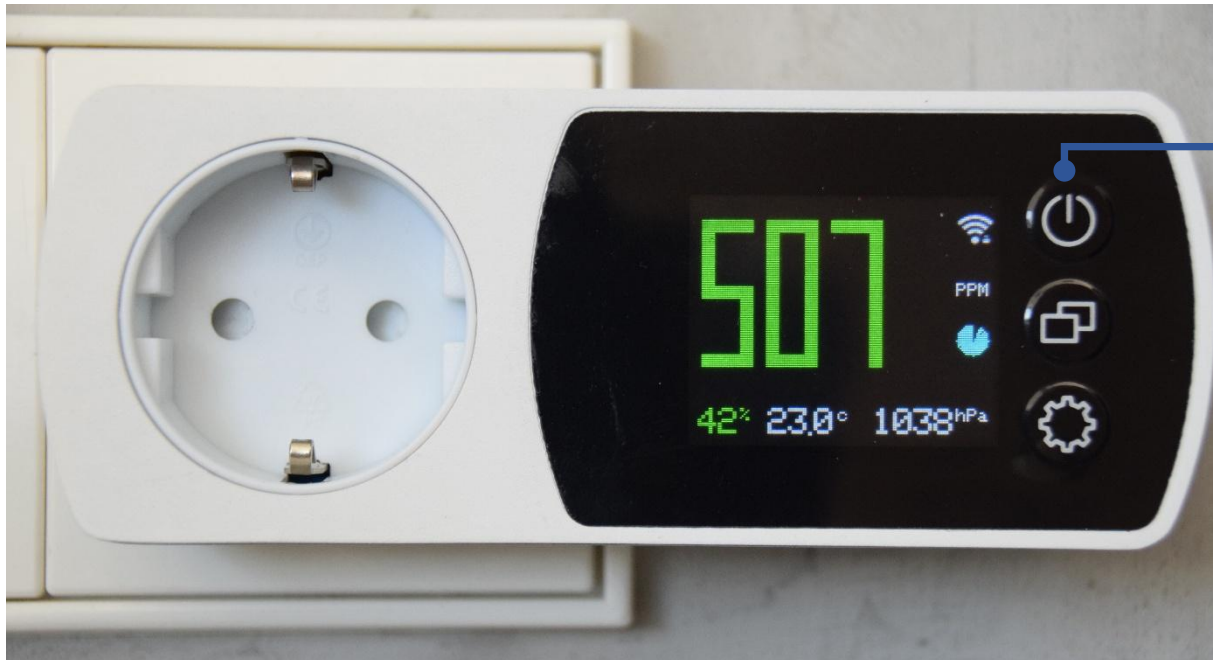
Unit Icon

The unit for CO2 is PPM, parts per million.

Measurement Cadence Icon

After each CO2 measurement, the green solid circle is displayed again. The green circle gets smaller as time passes until it has completely vanished and the next measurement is started.

DISPLAY button



DISPLAY Button

Single click: Switch display OFF. To switch display ON again, do another single click.

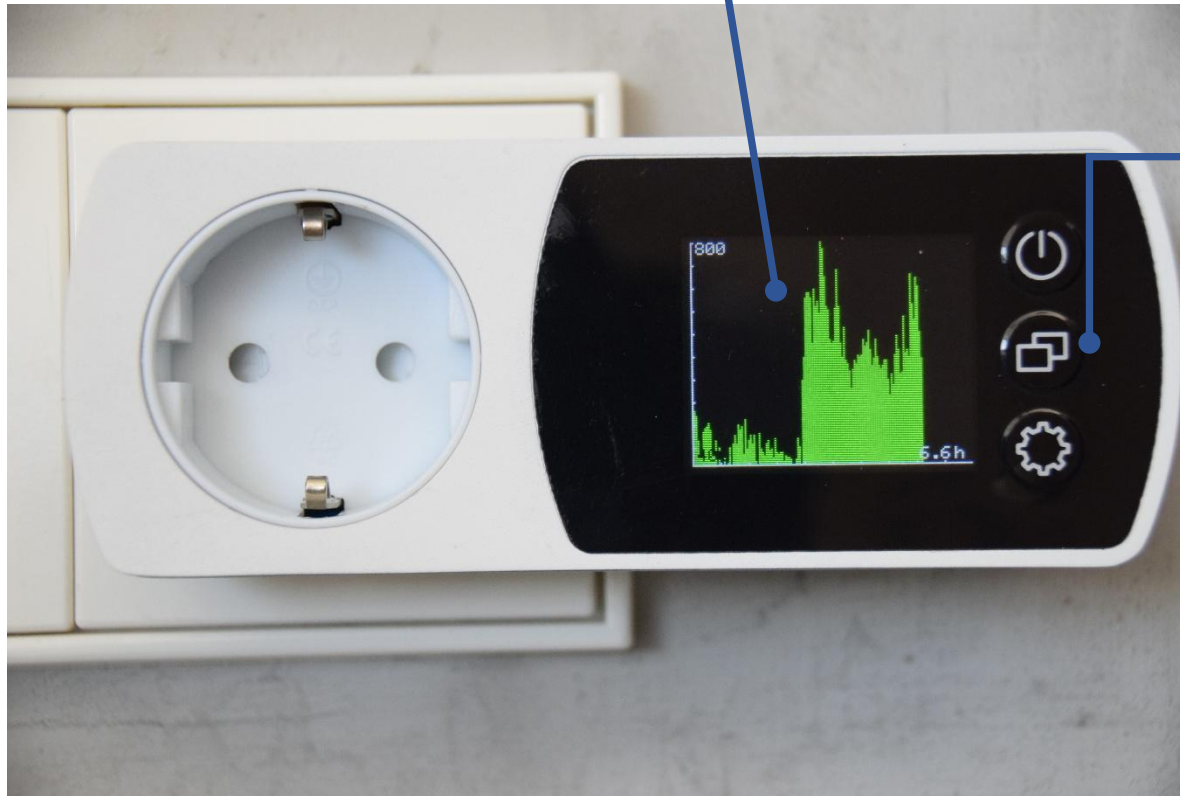
Double click: Dim display. To switch display to FULL again, do another double click.

Long click: Update Firmware. On the display the question is asked if you want to update the firmware. Pressing the mode button means YES, pressing the settings button means NO.

MODE button

CO2 Graph

All measured CO2 sensor values of the past 25 hours are displayed here in graphical form. Healthy values are displayed in green, mediocre values in yellow and unhealthy values in red.



MODE Button

Single click: Switch display to "CO2 Graph" view. To switch display to "CO2 Value" view again, do another single click.

Double click: Display minimum, maximum, average CO2 values of the last 24 hours. To switch display to "CO2 Value" view again, do another double click.

Long click: Calibrate the CO2 Sensor. On the display the question is asked if you want to calibrate the CO2 Sensor. Pressing the mode button means YES, pressing the settings button means NO. Calibrations takes 1300 seconds to complete!

WARNING: only do calibration outdoor in dry conditions or well ventilated indoor room.

SETTINGS button

Settings

Various import network settings are displayed here, like admin password, cloud username and cloud password. In case you forgot the admin password, it can be seen here. The cloud username and password are needed to login into the cloud. Go to <https://www.aurair.eu> and login to see your history!



SETTINGS Button

Single click: Switch display to settings page.
To switch display to "CO2 Value" view again, do another single click.

Double click: Disable admin password for the next 5 minutes, enabling you to login without password. To switch display to "CO2 Value" view again, do another double click.

Long click: Restores Factory settings. On the display the question is asked if you want to restore factory settings. Pressing the mode button means YES, pressing the settings button means NO.

AurAir BI



Troubleshooting

Here are some of the things to keep in mind when you encounter problems with the AurAir.

AurAir...	What happens?	What should I do?
Display the logo and waves for more than 3 minutes.	Initialization of the AurAir failed.	Pull the AurAir from the wall socket, wait for 20 seconds and put the AurAir back into the wall socket.
The background of the CO2 countdown is garbled.	For some reason the screen has not been cleared.	Ignore it, when the countdown finishes it will clear the screen.
CO2 value pixels from previous values are still on the display	For unknow reason it has not cleared the screen completely.	Press the mode button once to go to "CO2 Graph" mode and once again to go back to the "CO2 Value" view.