



AurAir

Domoticz Configuration **GUIDE**



AurAir

Domoticz Configuration Guide

1 Executive Summary

The AurAir is a versatile piece of equipment that is very flexible and can be used to retrieve data to several different home automation servers.



AurAir

Domoticz Configuration Guide

2 Version History

Date	Version	Comments
17-8-2019	0.1	Initial draft

3 Content

1	Executive Summary	1
2	Version History	2
3	Content	2
4	Purpose	3
5	Scope	3
6	Domoticz Configuration Setup	4
6.1	Create the AurAir poller script file	4
6.2	Domoticz Hardware Adapter Configuration	5
6.3	Domoticz Devices Configuration	6
6.4	Change the AurAir Poller file	6
7	Troubleshooting	7



AurAir

Domoticz Configuration Guide

4 Purpose

The Domoticz server can be configured to retrieve the CO₂ from an AurAir CO₂ monitor. This guide explains how to configure the Domoticz server to do that.



Configuring the Domoticz server will NOT have any influence on the AurAir Cloud function, that will still be working as usual.

5 Scope

The scope of AurAir Domoticz Configuration:

- AurAir Bx (B1, B2)



AurAir

Domoticz Configuration Guide

6 Domoticz Configuration Setup

6.1 Create the AurAir poller script file

Create a file called aurairco2.lua with the following contents:

```
local aurairco2_id = 0

-- Retrieve the content
s = request['content'];

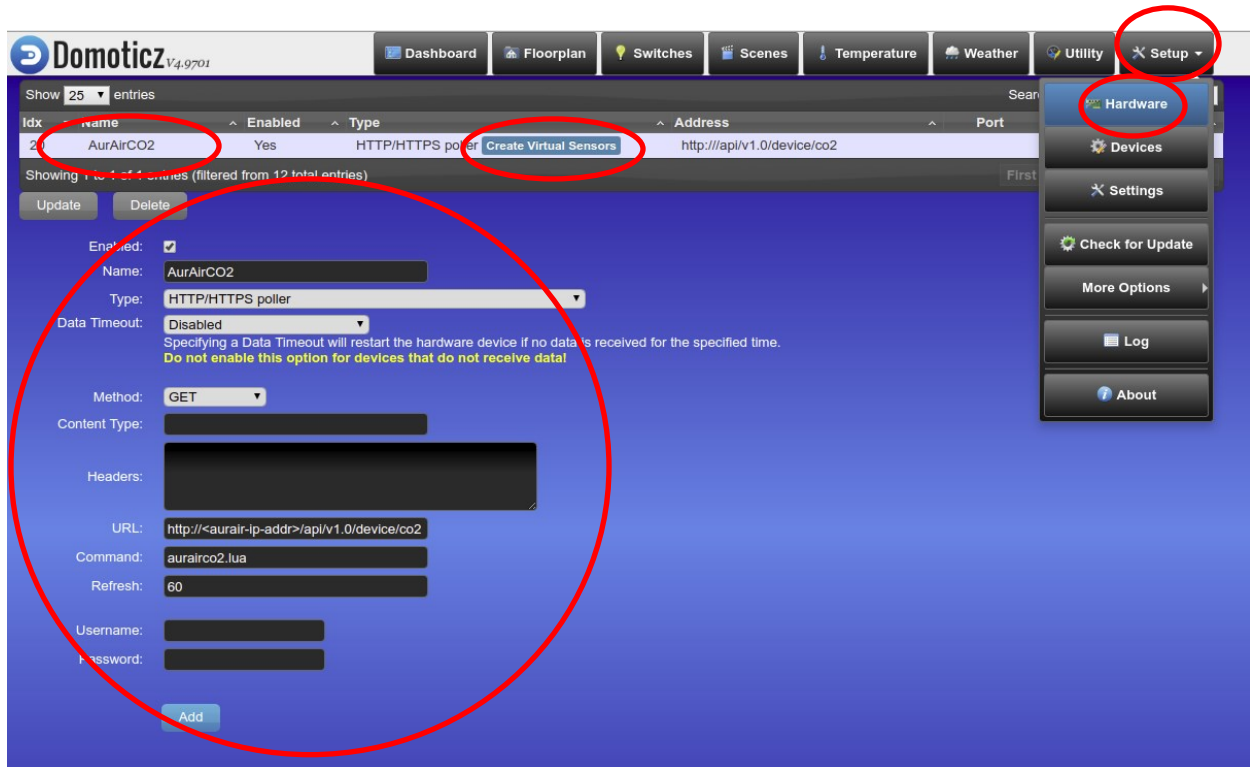
-- Note the hierarchy .stats.current for the json
local aurairCO2 = domoticz_applyJsonPath(s, '.co2')

domoticz_updateDevice(aurairco2_id, "aurairCO2")
```

Put this file in the directory **<domoticz>\scripts\lua_parsers** where **<domoticz>** is the domoticz home directory, on Windows the default directory is “C:\Program Files (x86)**Domoticz**”

6.2 Domoticz Hardware Adapter Configuration

The Domoticz configuration needs to be adjusted to include the Domoticz hardware adapter ‘HTTP/HTTPS poller’, which is used only for virtual switches.



To include the http poller adapter into Domoticz, go to the Domoticz web interface and click on the ‘Setup’ tab on the right side of the tab menu.

Next click on the ‘Hardware’ pull down menu option.

Enter the information in the adapter field as stated above and click on the ‘Add’ button. The http poller adapter should appear in the list of Domoticz hardware adapters.



AurAir Domoticz Configuration Guide

Click on the button 'Create Virtual Sensors'. The following popup should appear:

Create Virtual Sensor

Name:

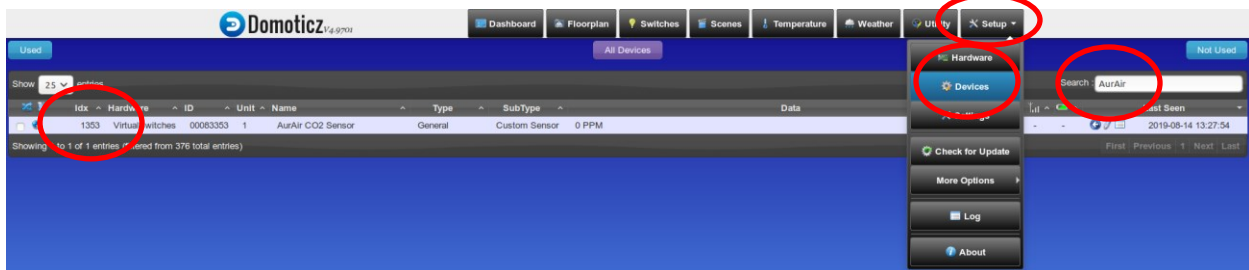
Sensor Type:

Axis Label:

Enter the name of the virtual CO2 sensor like 'AurAir CO2 Sensor' in the name field, select sensor type 'Custom Sensor', enter 'PPM' in Axis label field and click on the button 'OK'.

6.3 Domoticz Devices Configuration

Now that the virtual co2 sensor has been created, the IDX of the created sensor is needed for the AurAir configuration. Click on the 'Setup' tab on the right side of the tab menu and select 'Devices'.



Enter 'AurAir' in the search field on the right side and the newly create virtual CO2 sensor should appear. The Domoticz IDX (IDentifier) is listed on the left side of the sensor characteristics, write this number down!

6.4 Change the AurAir Poller file

Now that you now the IDX of the virtual device, it's time to change the AurAir poller script file from chapter 6.1.

Edit the script file and change the line:

```
local aurairco2_id = 0
```

into

```
local aurairco2_id = <IDX>
```

where <IDX> is the idx number you wrote down in chapter 6.3.

Save the file and restart Domoticz, the AurAir CO2 virtual sensor in Domoticz now should be up to date!



AurAir

Domoticz Configuration Guide

7 Troubleshooting

If you have not been successful in configuring the Domoticz server, the following questions might help you:

- Is the Domoticz HTTP Poller adapter active?
- Is the Domoticz HTTP Poller adapter URL correct?
- Is the Domoticz HTTP Poller adapter command correct?
- Is the IDX from the Domoticz virtual CO2 sensor correct?